

3 MAKEOVERS

MAINA PERROT TALKS TO THREE LANDSCAPE DESIGNERS ABOUT RECENT PROJECTS AND FINDS SOME STUNNING MAKEOVERS.

1

BEFORE



AFTER



SAMUEL LOCKIE HAD redesigned many gardens when Bill and Teena from Howick got in touch. He welcomed their challenge. The owners realised they were not making the most of the space available to them and that their backyard - although it had much to offer - did not do justice to their spacious, modern house.

The couple wished to create a practical yet strongly aesthetic living space all the while ensuring a continuous style was achieved. "The original site was one that had not aged well, the landscaping was tired and impractical, with no functional living space," Samuel says.

He also wanted to make the best of their North-facing backyard which gets the best - and sometimes the worst - of the afternoon sun.

"They wanted the new outdoor area to provide shade from the heat of summer sun and an area that flows naturally into the garden would make the space usable for all aspects of the family."

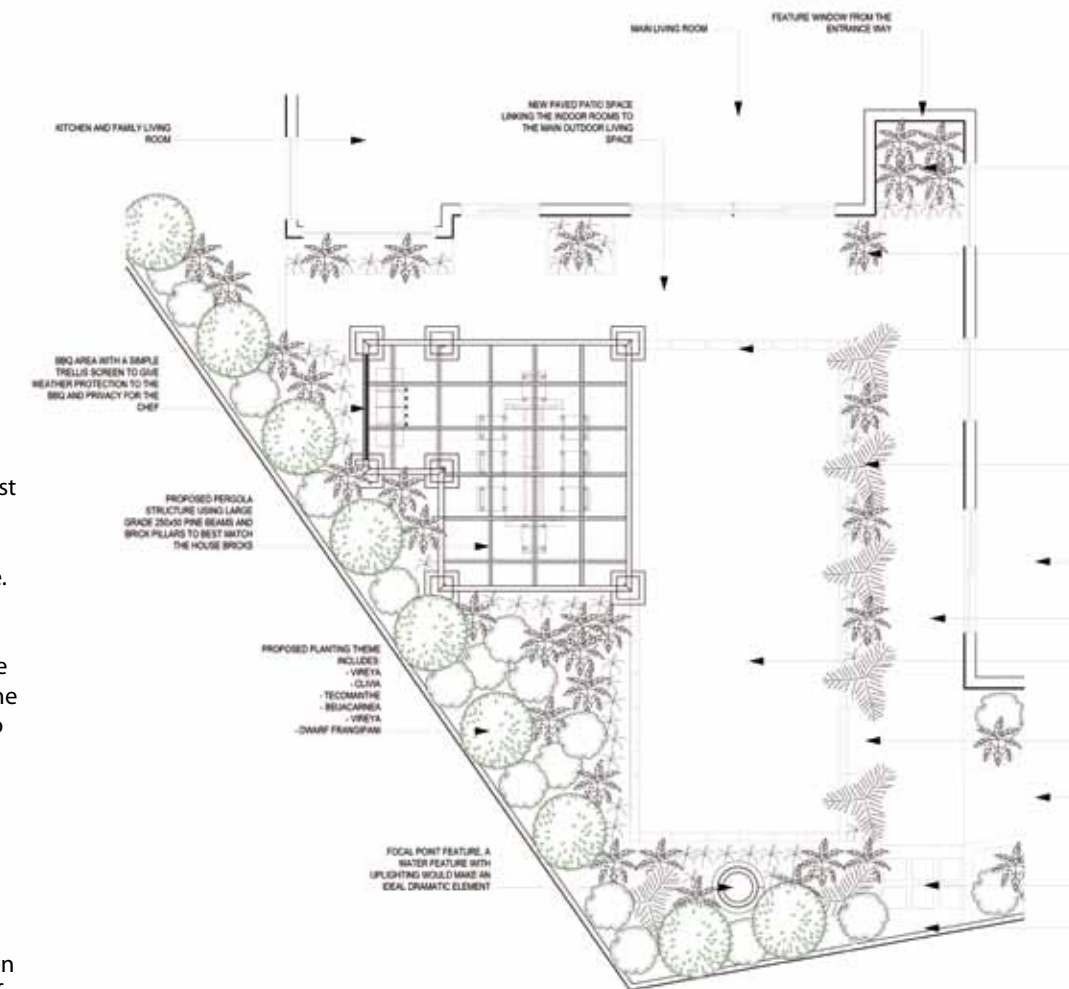
Samuel first developed a concept plan for the whole site addressing all aspects from street appeal, the back service area and especially the main living space.

"We agreed a pergola would add real strength to the garden, and would visually tie back into the house and make an area that was functional as well as a feature."

He then offered 3D presentations so that Bill and Teena could visualise and appreciate the proposed structure.

As you walk through the house, ranchsliders open up from the family room and kitchen, giving another glimpse of the available garden space. "This line of site and communication to the kitchen was the ideal spot for the chef and barbecue," Samuel adds.

Moving into the main living room of the



"The property had some fantastic features and strong architectural elements and these became the seed to the design," he says. He went from there and the result is a unique, well-cut and appealing and low-maintenance landscape.

From the main entrance doorway with a view through into the garden gives great opportunity to welcome guests with a sculpture or a feature plant. "This adds a tease of what is to come if one is to venture further and enter the garden."

As you walk through the house, ranchsliders open up from the family room and kitchen, giving another glimpse of the available garden space. "This line of site and communication to the kitchen was the ideal spot for the chef and barbecue," Samuel adds.

Moving into the main living room of the

house the garden is then exposed, merging indoor living and outdoor space, creating an attractive area where people needed to feel invited outside.

Palm trees and other tropical plants create natural boundaries around the garden in a simple, yet attractive way.

Samuel redesigned, planned and went through the consent drawing and construction consultation processes and the new garden was completed in 2006.

"The clients were fabulous to work with, they had a great brief and a great blank site that gave me a freedom that not often is found," Samuel reflects.

"The result was everything we were hoping for, lush, cool and inviting. With tropical planting and the open outdoor pergola, it truly is a space that was a hidden backyard paradise."

Samuel Lockie

Samuel Lockie is the principal landscape designer for Landscape Transformations Ltd. He completed a Diploma in Landscape Design and a Certificate Horticulture Skills. He has been working in the industry since 1999 and designing landscapes since 2001 in Auckland and overseas. www.landscapetransformations.co.nz

